



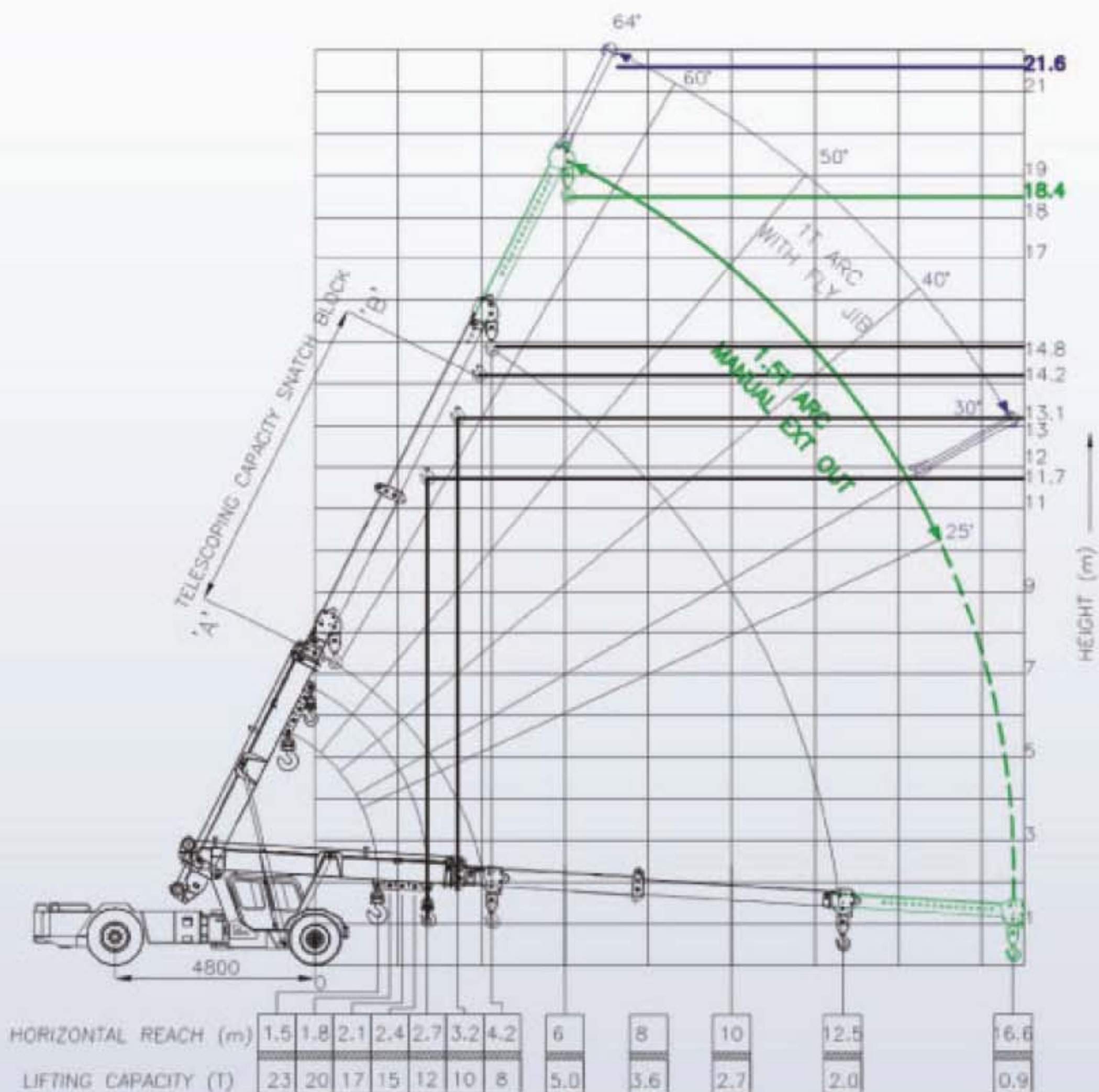
• Maximum Load Lifting Capacity
23 T

• Maximum Boom Height
19m / 22m with fly jib

• Maximum Horizontal Reach
16.6m

• Hydrostatic Transmission
with stepless variable speed upto 40 kmph

Load Chart of ESCORTS TRX 2319



FEATURES:

- Hydrostatic Transmission with stepless variable speeds
- Safe load indicator (SLI) system as a standard fitment
- Rope compensating snatch block for auto leveling of loads
- Maximum Travel speed of 40 km/hr (unladen) for faster coverage of long distances
- 4 part boom (3 part hydraulically powered + 4th part mechanically operated) for higher heights
- Front-end centrally mounted aesthetically designed spacious cabin for 2 persons with ergonomic controls
- Load deck at the rear
- Joystick controls

NOTE:

- Maximum load lifting capacity : 23 T
- Maximum Boom Height : 19m / 22m with fly jib
- Maximum Horizontal Reach : 16.6m
- 12T can be lifted to the under hook height of 11.7m.
- 10T can be lifted to the under hook height of 13.1m.
- 9T can be lifted to the under hook height of 14.2m.
- 8T can be lifted to the under hook height of 14.8m.
- Telescopic capacity (laden) of snatch block from pt. 'A' to 'B' - 9T
- 1.5T can be lifted to the under hook height of 18.4m.
- 1T can be lifted to the under hook height of 21.6m.
- Tyres to be inflated with recommended air pressure.
- Lifting capacity is as per IS: 4573 - 1982 on a firm & level ground.
- Weights of chains, slings & tackles to be considered extra.

Specifications ESCORTS TRX 2319

Rated Capacity

- 23T @ 1.5m radius from the centre of front wheel
- 0.9T @ 16.6m from the centre of front wheel

Engine

KIRLOSKAR 6R 1080 NA, 6 cylinder
Water Cooled Diesel Engine
Rated power for crane 122 BHP @ 2500 RPM
or equivalent engine

Transmission

- Drive: 2 Wheel Drive
- Type: Hydrostatic Transmission
- Travel Speed: 40 Kmph (unladen condition)
- Gradeability: 35% unladen

Steering

- Fully powered orbital steering with twin double acting rams
- Type: Articulated power steering, through steering wheel
- Articulation: upto 35° on either side
- Turning Radius: 8m

Brakes

- Service: Fully air operated "S" cam dual circuit brakes on both axles
- Front Wheel: Pneumatically assisted hydraulic brakes
- Rear Wheel: Air Brakes
- Parking: Spring Loaded Brake, Air-released on Rear Axle

Track

- Front: 2150 mm (center of twin wheels)
- Rear: 2000 mm (center of wheels)
- Wheel Base: 4800 mm

Tyres

- Front: 12.00x24-20 PR (Four Nos.)
- Rear: 14x25-24 PR (Two Nos.)

Axles

- Front: Rigidly mounted on front frame
- Rear: Drive axle, mounted on semielliptical springs

Boom

- Telescoping: Four Part Boom, 3 Part, hydraulically powered & fully synchronised 4th Part mechanically extended (Use 6 fall when mechanical Extension is retracted) (Use 4 fall when mechanical Extension is extended)
- Derricking: Through double acting jacks

Hoist Mechanism

- Hoist: Hydraulic winch with Six / Four falls
Rope dia 13mm

Hydraulic System

- Travel Pump: Axial Piston Pump (Close Loop Circuit)
- Travel Motor: Bent Axis Variable Displacement Motor (Close Loop Circuit)
- Craning and Steering Pump: Tandem Vane Pump

Control Valve

- Proportional control valve hydraulically actuated through Joy stick
- 3 spool double acting with a built in relief & auxiliary valves

Filters

- High Pressure 10 micron in Travel Circuit while craning circuit has 25 micron full flow filter

Electrical System

- Type: 12V DC Single battery, Negative Earth

Capacities

- Fuel Tank: 180 Ltrs.
- Hydraulic Tank (Open circuit): 170 Ltrs.
- Hydraulic Tank (Closed circuit): 70 Ltrs.

Operating Weight (Kg)

18200

Axle Loading

- Rear Axle: 9850 kg
- Front Axle: 8350 kg

Overall Dimensions

- Height: 3100 mm
- Width: 2500 mm
- Length: 11160 mm

Safety System

- Safe Load Indicator with hydraulic cut off
- Safety brakes on hoist
- Hose protection failure device
- Rope compensating snatch block

Standard Accessories

- All Weather Cabin
- Front Bumper
- Reflectors
- Tools & Tackle Box
- Rear View Mirror
- Turn & Reverse Lamp
- Instrument Cluster
- Battery Cut-off

Optional Accessories

- Fly Jib 2.6 M Length
- Fire Extinguisher
- Air Conditioned Cabin
- Extra Hooks
- Rhino Hook
- Stepney

All Dimensions and Weights are variable within +/- 5%