



ESCORTS F-15

Hydraulic Mobile Pick-n-Carry Crane

- Travel Long Distances on own Power
- Boom Height with Flyjib: 21m
- Heavy Duty Hoist Winch
- Front Mounted Cabin with Steering Wheel
- Slotted Boom with Self Compensating Snatch Block
- New Technology Control Valve for Precision Handling
- 4 Wheel: 2 Wheel Drive selector
- Dragging Winch with Outriggers (Optional)
- Safe Load Indicator with Hydraulic cutoff (Optional)

SPECIFICATIONS F-15

Rated Capacity

14 tonne at 1.50 m radius
 900 Kg at 15.80 m radius
 Max hook height 17.60 m

Vehicle Performance

Speed max 40 kmph
 Gradeability 40% unladen

Drive

4 wheel drive

Engine

Diesel engine of NOEL make, Model 4R 1040T Turbo charged water cooled, developing 110 hp @ 2500 rpm or equivalent engine.

Transmission

Synchromesh gearbox with auxiliary gearbox
 Speeds-8 forward and 2 reverse

Clutch

Single, dry type friction clutch plate

Brakes

Service: Fully air operated 'S' cam dual circuit brakes on front & rear axles
 Parking: Air operated, spring actuated fail safe brakes

Axles

Front - rigidly mounted
 Rear - mounted with two semielliptical springs

Tyres

8 nos. - 11x20 - 16 PR

Hydraulic system

Main pump of 46 cc/rev,
 Control Valve - 3 spool double acting with a built in relief & auxiliary valves

Electrical System

24 V, DC

Steering

Full power orbital with twin hydraulic double acting rams 40° articulation on either side

Boom

4 part boom, 3 part hydraulically powered & fully synchronised. 4th part power extended and manually pinned for safety

Hoist

Hydraulically operated with 4 falls
 Built in safety brakes

Wheel Base

3.95 m

Dimensions

Overall length 9725 mm
 Overall width 2450 mm
 Overall height 3215 mm

Wheel Track

Front 1825 mm
 Rear 1825 mm

Axle Loading

Front Axle 6315 kg
 Rear Axle 9000 kg
 Total 15315 kg

Turning Radius

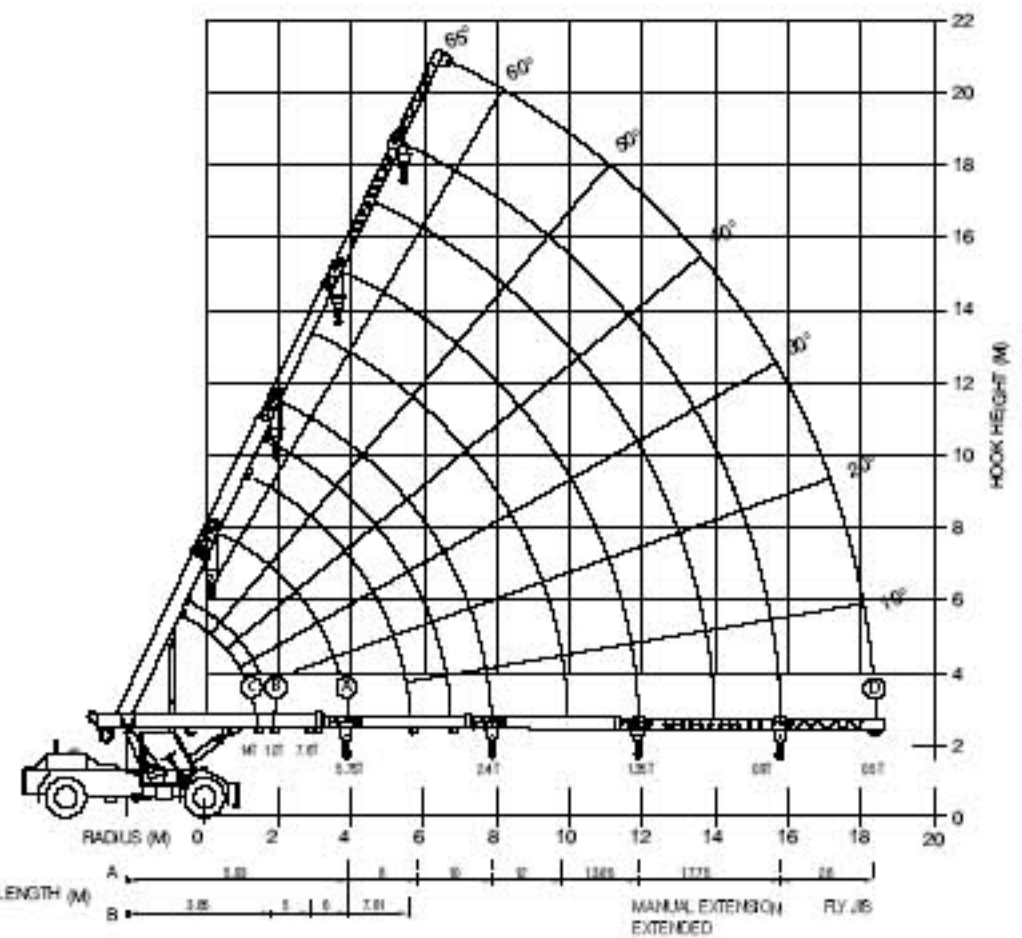
7.2 m

Standard Accessories

All weather cabin with unrestricted visibility

Optional Accessories

- 2.5 m fly jib
- Spare wheel
- Air conditioned cabin
- Safe load Indicator with Hydraulic Cutoff
- RHINO Hook
- Man carrying basket (275 kg)
- Additional cabin
- 4x2 Wheel Drive
- Outriggers
- Dragging Winch



BOOM LENGTH (M)	A						B				C				D		
	5.00	7.00	8.00	9.00	10.00	11.00	12.00	13.00	14.00	15.00	16.00	17.00	18.00	19.00	20.00	SWL (kg)	SWL (kg)
2	7500	7500	7500													12000	11000
3	7500	7500	6000	5300												7800	7000
4	6750	5700	5070	4500	3870											4800	4750
5		4800	4750	4800	3450	1880											3570
6			3400	3525	3475	2400	1575										
7				2900	2800	2750	1475										
8					2400	2475	2400	1480									
9						2100	2400	1420									
10							1775	1250									
11								1950	1180								
12									1350	1135							
13										1110							
14											800						
15												800					
16													800				
17														800			

- Radius is the horizontal Distance Measured from the centre of front wheel to the load point
 - S.W.L. are based on 75% stability & strength
 - S.W.L. are based on firm level ground with tyres 11x20 - 16 ply rating inflated to 115 PSI. Weight of hooks, blocks, slings & chain etc. included
 - Lift & Carry - the S.W.L. shall be carried with the minimum boom length & as close to the ground as possible at speeds not in excess of 2 kmph.
 - Boom head mounted RHINO hook capacity - 6000 kg
- All dimensions are in mm and are variable within ± 5%